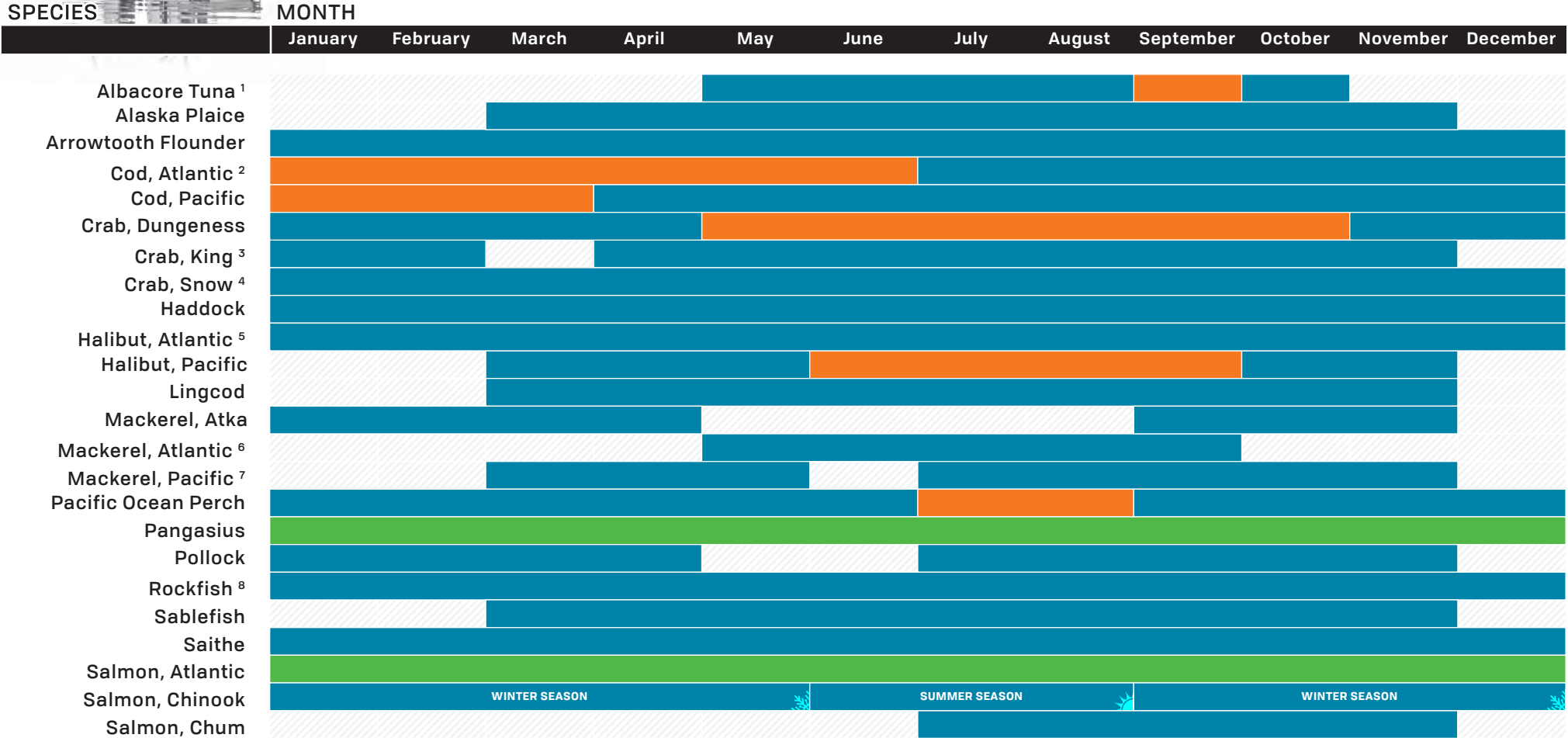




COMMERCIAL FISHING SEASONS



LEGEND

1 Seasonality is based on North Pacific fisheries
 2 Seasonality is for the North East Arctic Cod stock - one of the few remaining stocks in good condition. The Northeast US fishery is open year-round and in Canada various openings and closures in specific areas are decided by Conservation Harvesting Plans.
 3 Seasonality is dependant on when the ice melts and may last several weeks or just a few days.
 4 Alaska's Season is mid-fall - February and sometimes extends into Spring; Atlantic Canada's Season is April - November.
 5 State fisheries are open April 1st - June 30th; Federal fisheries are year-round. Atlantic Halibut fisheries were once overfished and are currently under a rebuilding program. Fisheries are not subject to overfishing today.
 6 Seasonality in chart is for Canada. The US fishery is open year-round.
 7 Seasonality is determined locally by regional oceanographic conditions. This chart is based on California state fisheries because it is the state in which most US Pacific Mackerel is harvested.
 8 Seasonality is based on Alaskan state fisheries. Rockfish are highly vulnerable to fishing pressure and therefore openings and closures are tightly regulated and may vary year-to-year.

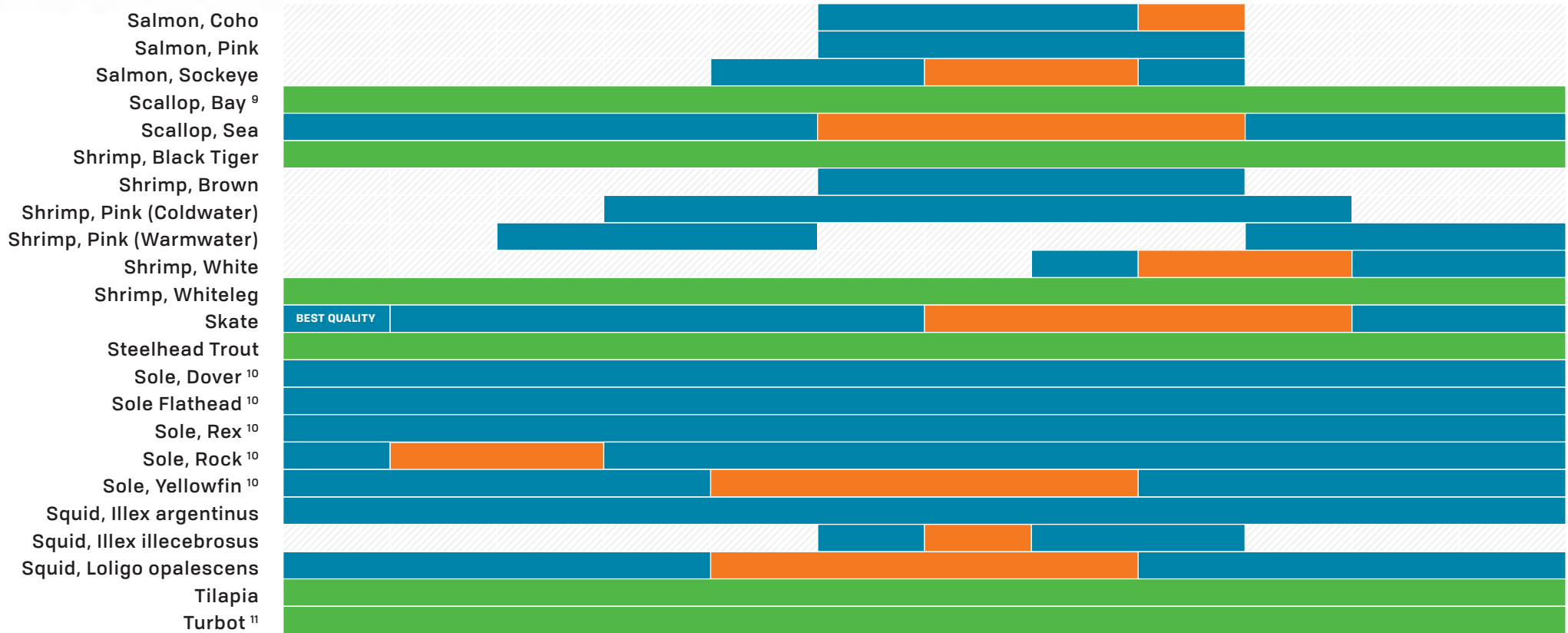
GUIDE ■ OPEN SEASON ■ HIGH SEASON ■ FARMED





COMMERCIAL FISHING SEASONS

SPECIES	MONTH	January	February	March	April	May	June	July	August	September	October	November	December
---------	-------	---------	----------	-------	-------	-----	------	------	--------	-----------	---------	----------	----------



LEGEND

⁹ Wild fisheries also exist - for which seasonality varies by region.
¹⁰ Seasonality is based on Alaska state fisheries for which some are directed, while others are bycatch.
¹¹ Wild-caught Turbot is also available - for which seasonality varies by country and fishery.

GUIDE ■ OPEN SEASON ■ HIGH SEASON ■ FARMED

